

G R E V S T Å D

FINISHES



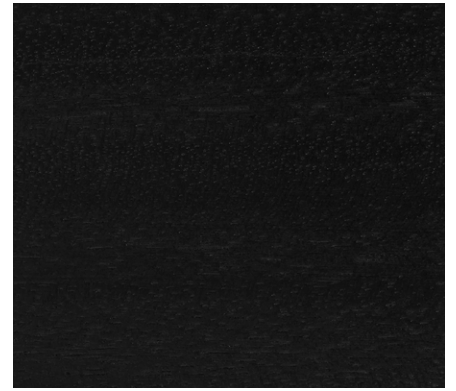
# MAHOGANY



#1ALS - QUARTERED MAHOGANY  
WHITE CHOCOLATE



#1BLS - QUARTERED MAHOGANY - SABLE



#1CLS - QUARTERED MAHOGANY - EBONY



#1CLS - QUARTERED MAHOGANY - CHALK

# OAK



#3GLS - RIFT OAK - CERUSE MUSHROOM



#3HLS - RIFT OAK - CERUSE BRONZE



#3ILS - RIFT OAK - CERUSE CINDER



#3JLS - RIFT OAK  
CERUSE BLACKENED PLATINUM



#3KLS - RIFT OAK - WHITE SAND

# M A P L E



#4KLS - MAPLE - LIGHT



#4LLS - MAPLE - MEDIUM



#4MLS - MAPLE - DARK



#4NLS - MAPLE - EBONY

# F I R



#13TLS - FIR - TEXTURED CINDER



#13VLS - FIR - DARK ZINC BROWN

# WALNUT



#5DLS - QUARTERED WALNUT  
LIGHT BRONZE



#5ELS - QUARTERED WALNUT - GREIGE



#5KLS - QUARTERED WALNUT - LIGHT



#5LLS - QUARTERED WALNUT - MEDIUM



#5MLS - QUARTERED WALNUT - DARK



#5NLS - QUARTERED WALNUT - EBONY



#5PLS - QUARTERED WALNUT  
CERUSE NOISETTE



#5QLS - QUARTERED WALNUT  
CERUSE FLINT



#5RLS - QUARTERED WALNUT  
BLEACHED WALNUT BROWN



#5SLS - QUARTERED WALNUT  
BLEACHED WALNUT GRAY



#5TLS - QUARTERED WALNUT  
DRIFTWOOD



#5OLS - QUARTERED WALNUT  
NATURAL

WALNUT - cont'd



#5ULS - QUARTERED WALNUT - CHESTNUT

EXOTICS / CANING



#6OLS - EMBOYA - NATURAL



#7OLS - QUARTERED WENGE - NATURAL



#8OLS - MACASSAR EBONY - NATURAL



#9OLS - KOA - NATURAL



CANING - LIGHT

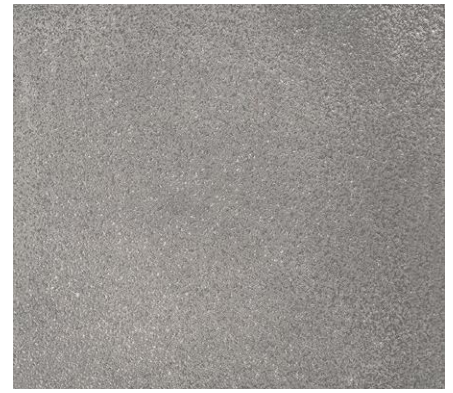
# METALS



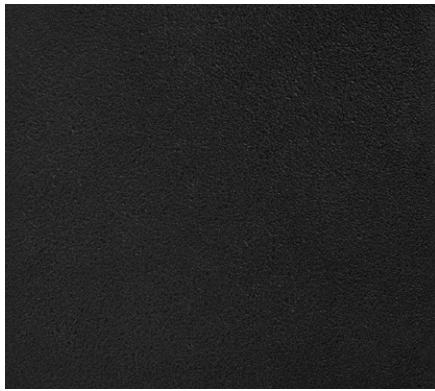
#12M1 - METAL - SATIN NICKEL



#12M3 - METAL - POLISHED NICKEL



#12M4 - METAL - TEXTURED NICKEL



#12M5 - METAL - TEXTURED BRONZE



#12M6 - METAL - DARKENED BRONZE



#12M8 - METAL - BLACKENED METAL



#12M9 - METAL - BLACK POWDERCOAT



#12M10 - METAL  
BLACK SATIN POWDERCOAT



#12M12 - METAL - BRONZE FLAMESPRAY



#12M13 - METAL  
SANDED BRONZE FLAMESPRAY

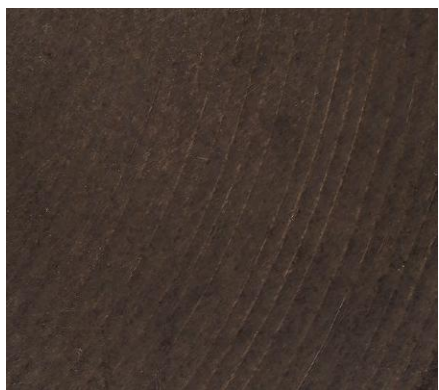


#12M14 - METAL  
SANDED NICKEL FLAMESPRAY



#12M15 - METAL - HAMMERED STEEL

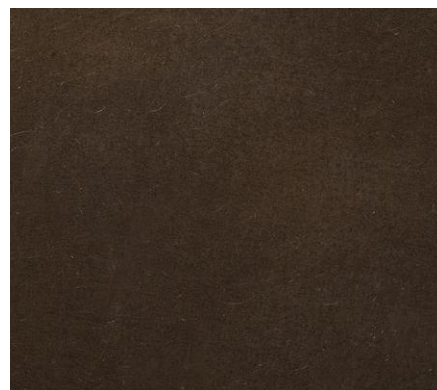
METALS - cont'd



#12M16 - METAL - SPUN STEEL



#12M17 - BRONZE, MEDIUM



#12M18 - BRONZE, DARK