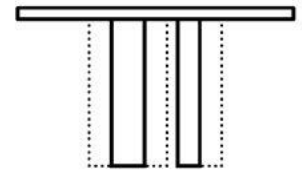
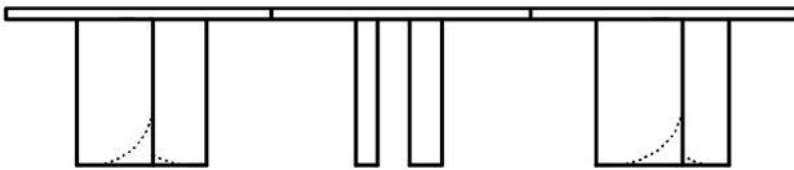
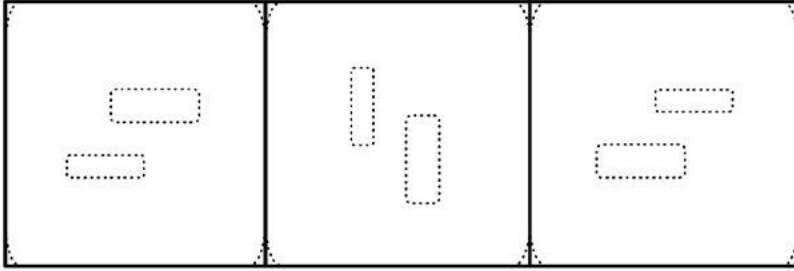




# ECC Table

Unlimited

STACKLAB|OBJECT



# ECC Table

Unlimited

Comprised of over 90 percent non-virgin materials, the ECC Table System features two modular tables that can be configured into versatile compositions suited to both indoor and outdoor use.

ECC resembles, but is more elastic and less brittle than, concrete, and ideal for the building of furniture. It uses recycled glass as an aggregate and recycled fiber as a reinforcing agent.

The structural properties of ECC make it possible to use it as a skin around a lightweight recycled foam core. Foam is replaced with solid, or near-solid ECC to optimize weight distribution in portions of the pedestals.

The ECC Table System is made in collaboration with STACKLAB's regional network of artisans and manufacturers in Toronto

## Dimensions

6 Seats: 48" W x 48" L x 30" H

10 Seats: 48" W x 96" L x 30" H

14 Seats: 48" W x 144" L x 30" H

## Materials and Finishes

### Table Top Options:

- ECC with 1000 White pigment
- ECC with 1000 Black pigment
- ECC with Natural Shade pigment
- ECC with Clean Grey pigment

### Leg Options:

- ECC with 1000 White pigment
- ECC with 1000 Black pigment
- ECC with Natural Shade pigment
- ECC with Clean Grey pigment

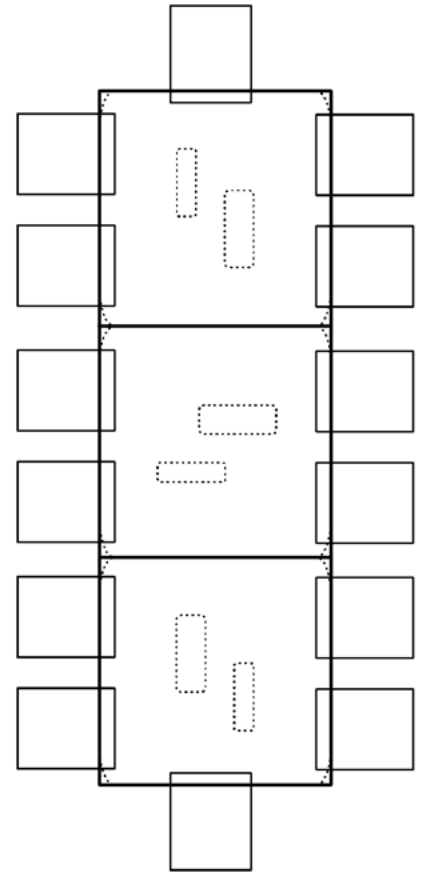
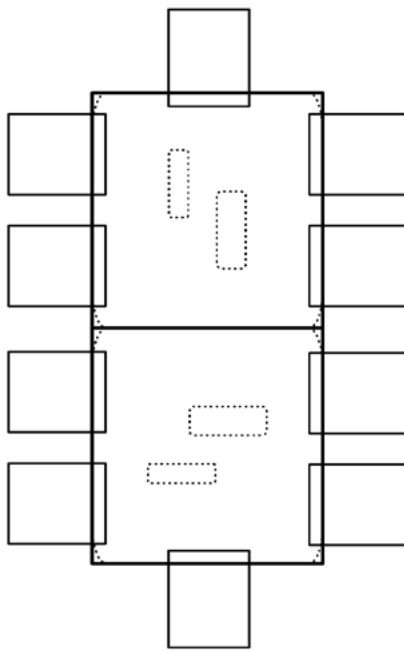
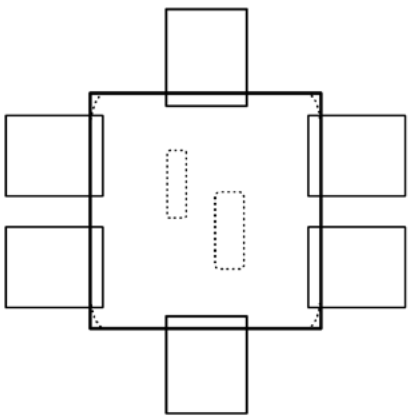
*\*Contact us for detailed material information.*

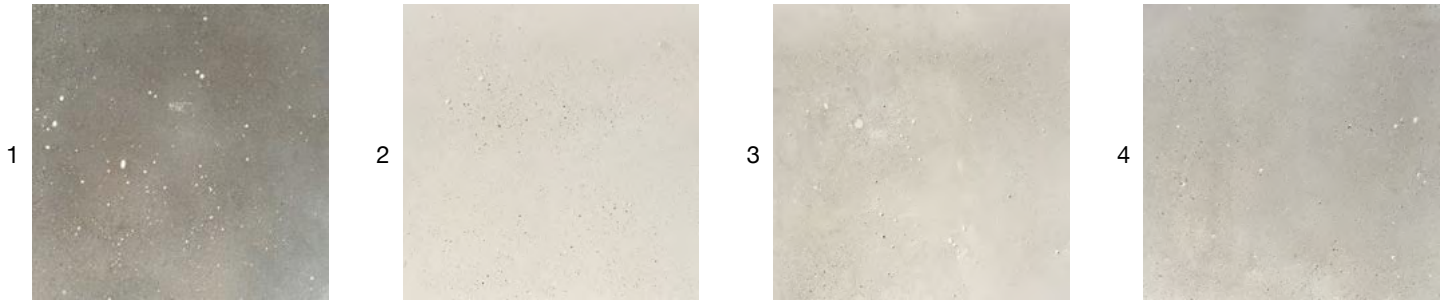
## Weight

- ~365 - 875 lbs. (Varies)

## Lead Time

- 12 - 14 Weeks





#### Table Top + Leg Material Options

1. ECC with 1000 Black pigment
2. ECC with 1000 White pigment
3. ECC with Natural Shade pigment
4. ECC with Clean Grey pigment

*\* Please note that colours may vary between production runs.*