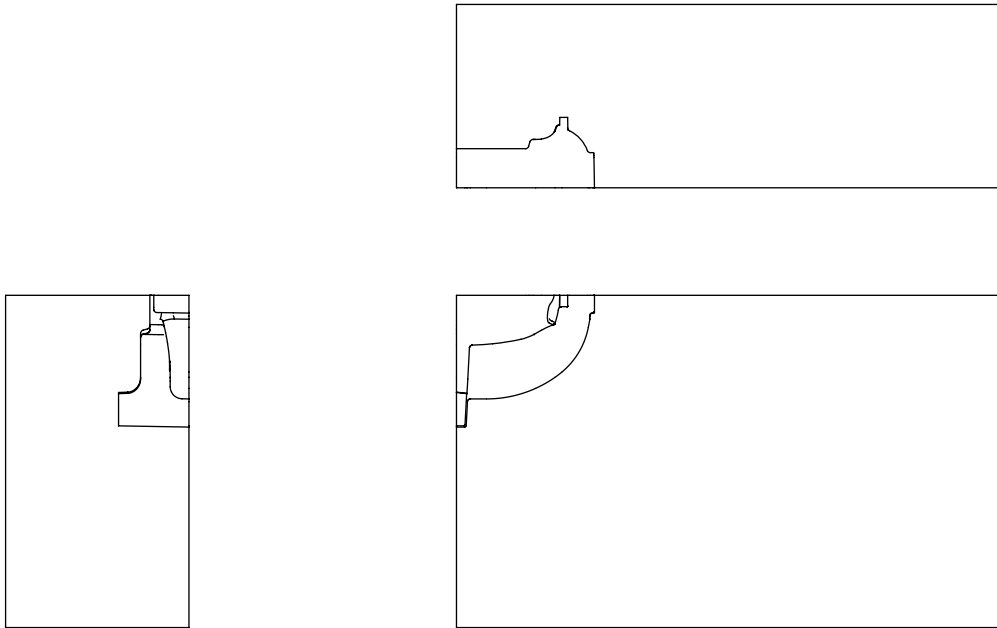




Cube Collection | Console

Cube Collection | Console | Type A



Building on the foundational concept, the Cube Console expands the language of the series, integrating quarter sections from a retired historic water pump wooden pattern into its enlarged molds. The result is four substantial, purpose-specific indoor/outdoor pieces that can serve as entryway tables, display platforms, or sculptural focal points. Cast in Engineered Cementitious Composite (ECC) and composed of over 80 percent non-virgin materials, the consoles embody the collection’s sustainability ethos.

Celebrating its industrial lineage, the industrial imprints on the console can be highlighted with a 24-karat gold gilding as an option.

DIMENSIONS

48” L x 16” D x 29” H or 32” H

60” L x 16” D x 29” H or 32” H

72” L x 16” D x 29” H or 32” H

MATERIALS

ECC Finish Options

ECC | 1000 Black

ECC | 1000 White

ECC | Clean Grey

ECC | Natural

24-Karat Gold (optional)

Custom pigments available upon request

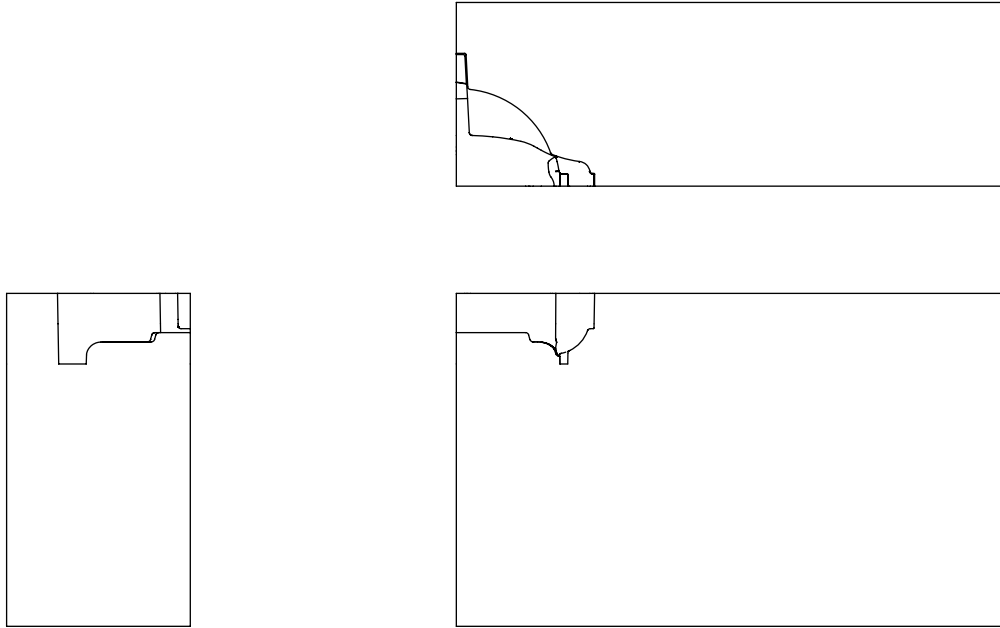
Weight

Varies, please inquire

Lead Time

14-16 weeks

Cube Collection | Console | Type B



Building on the foundational concept, the Cube Console expands the language of the series, integrating quarter sections from a retired historic water pump wooden pattern into its enlarged molds. The result is four substantial, purpose-specific indoor/outdoor pieces that can serve as entryway tables, display platforms, or sculptural focal points. Cast in Engineered Cementitious Composite (ECC) and composed of over 80 percent non-virgin materials, the consoles embody the collection's sustainability ethos.

Celebrating its industrial lineage, the industrial imprints on the console can be highlighted with a 24-karat gold gilding as an option.

DIMENSIONS

48" L x 16" D x 29" H or 32" H

60" L x 16" D x 29" H or 32" H

72" L x 16" D x 29" H or 32" H

MATERIALS

ECC Finish Options

ECC | 1000 Black

ECC | 1000 White

ECC | Clean Grey

ECC | Natural

24-Karat Gold (optional)

Custom pigments available upon request

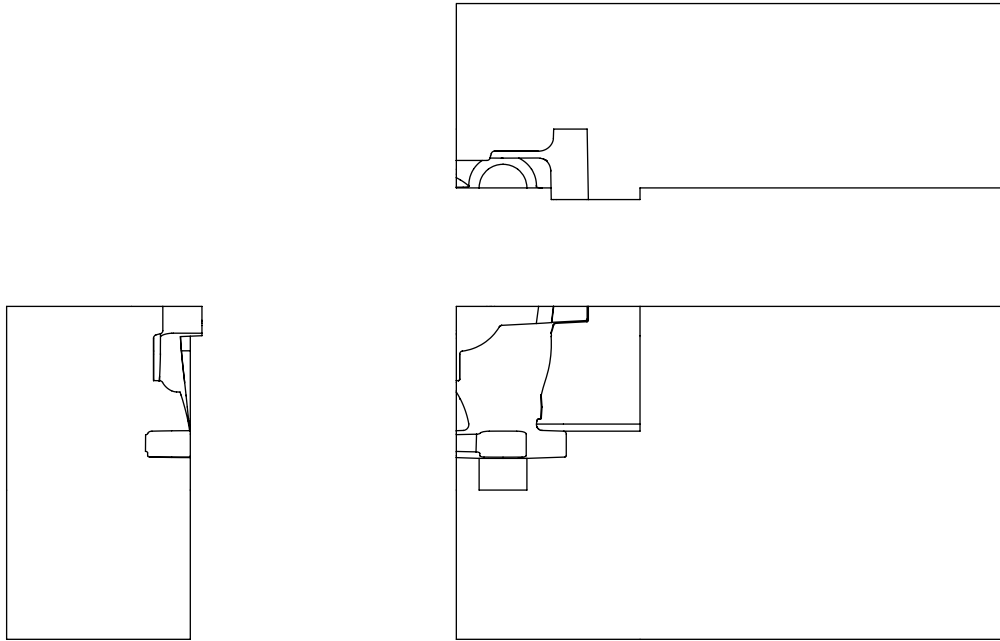
Weight

Varies, please inquire

Lead Time

14-16 weeks

Cube Collection | Console | Type C



Building on the foundational concept, the Cube Console expands the language of the series, integrating quarter sections from a retired historic water pump wooden pattern into its enlarged molds. The result is four substantial, purpose-specific indoor/outdoor pieces that can serve as entryway tables, display platforms, or sculptural focal points. Cast in Engineered Cementitious Composite (ECC) and composed of over 80 percent non-virgin materials, the consoles embody the collection's sustainability ethos.

Celebrating its industrial lineage, the industrial imprints on the console can be highlighted with a 24-karat gold gilding as an option.

DIMENSIONS

48" L x 16" D x 29" H or 32" H

60" L x 16" D x 29" H or 32" H

72" L x 16" D x 29" H or 32" H

MATERIALS

ECC Finish Options

ECC | 1000 Black

ECC | 1000 White

ECC | Clean Grey

ECC | Natural

24-Karat Gold (optional)

Custom pigments available upon request

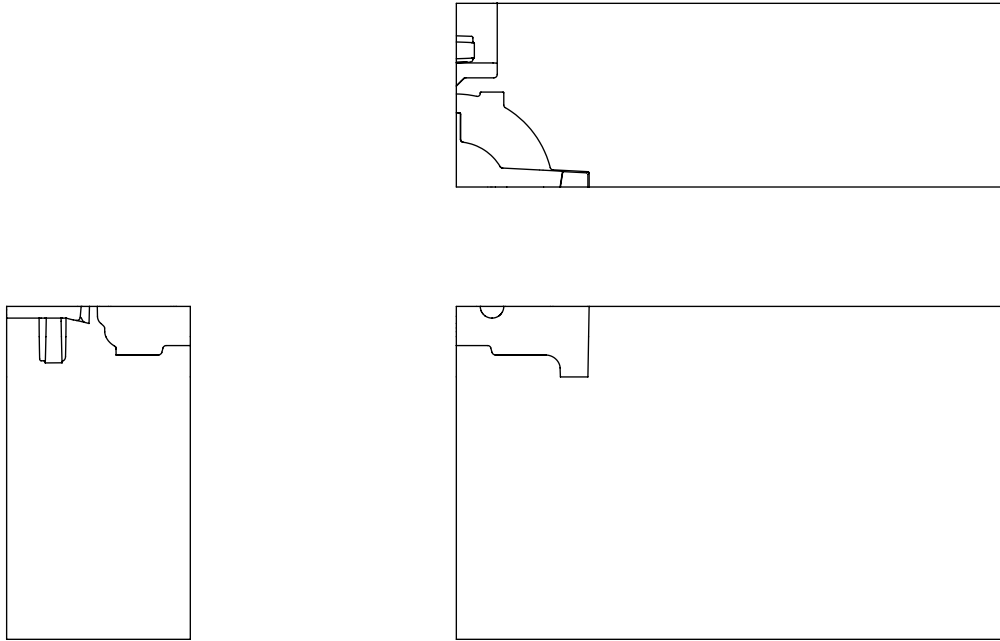
Weight

Varies, please inquire

Lead Time

14-16 weeks

Cube Collection | Console | Type D



Building on the foundational concept, the Cube Console expands the language of the series, integrating quarter sections from a retired historic water pump wooden pattern into its enlarged molds. The result is four substantial, purpose-specific indoor/outdoor pieces that can serve as entryway tables, display platforms, or sculptural focal points. Cast in Engineered Cementitious Composite (ECC) and composed of over 80 percent non-virgin materials, the consoles embody the collection's sustainability ethos.

Celebrating its industrial lineage, the industrial imprints on the console can be highlighted with a 24-karat gold gilding as an option.

DIMENSIONS

48" L x 16" D x 29" H or 32" H

60" L x 16" D x 29" H or 32" H

72" L x 16" D x 29" H or 32" H

MATERIALS

ECC Finish Options

ECC | 1000 Black

ECC | 1000 White

ECC | Clean Grey

ECC | Natural

24-Karat Gold (optional)

Custom pigments available upon request

Weight

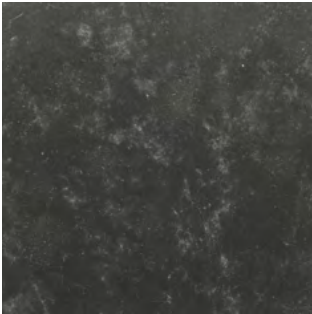
Varies, please inquire

Lead Time

14-16 weeks

Cube Collection | Console

ECC Finish Options



ECC | 1000 Black



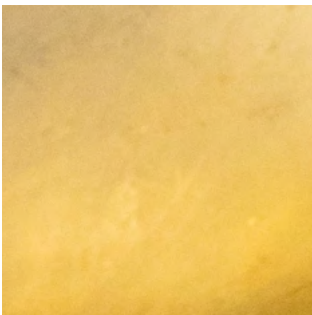
ECC | 1000 White



ECC | Clean Grey



ECC | Natural



24-Karat Gold

**Please note that colors may vary between production runs.*