

Shown: ECC with Natural Shade  
Photography: Maison Gerard  
© Stacklab Inc. All rights reserved

## Cube Series

Limited

**STACKLAB|OBJECT**

DENNIS MILLER NEW YORK

T 212.684.0070 [dennismiller.com](http://dennismiller.com)

# Cube Series

Limited

Available in four variations, Cube has a flexible range of functions: stool, bench, ottoman, table, or artwork. Together, they offer these same functions but have the benefit of modular configurability.

The Cube Series celebrates the industrial process that creates moulds for producing sand-cast metal parts. While patterns are still commonly used in manufacturing, they are regularly decommissioned and archived in response to industry innovation. There is a growing abundance of unproductive industrial patterns in foundries and factories and STACKLAB, interested in reintegrating historic materials into the scaled production of useful, modern objects, invented a reuse strategy.

## Dimensions

- 16" W x 16" D x 16" H

## ECC Pigment Options

- 1000 White
- 1000 Black
- Natural Shade
- Clean Grey

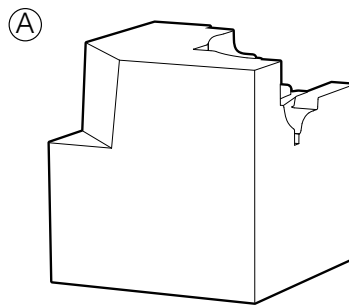
*\*Colour and texture varies between production runs. Please note that images are not fully representative of final colouring. Physical samples are available on request. Contact us for detailed material information.*

## Weight

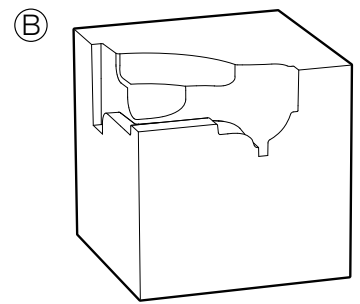
- ~ 50-75 lbs. Per Unit (Varies)

## Lead Time

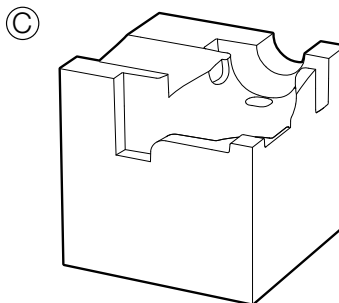
- 12-14 weeks



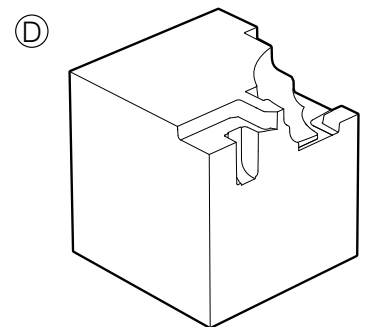
Edition of 25



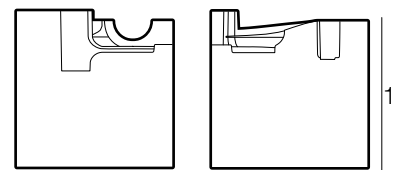
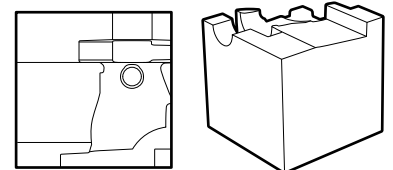
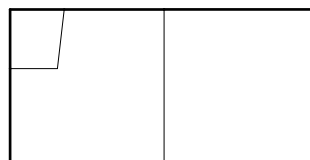
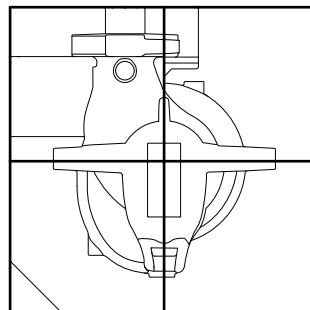
Edition of 25



Edition of 25



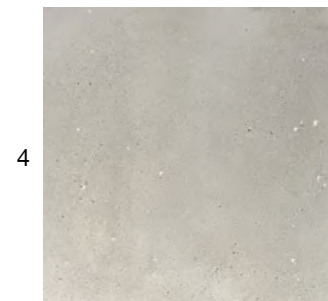
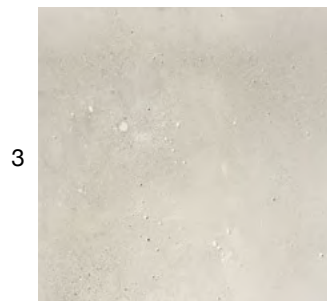
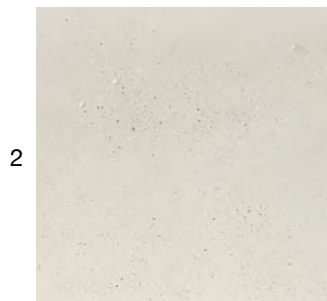
Edition of 25



AR preview available on iOS devices

DENNIS MILLER NEW YORK  
200 Lexington Ave. Suite 1210. New York, NY 10016  
212.684.0070 Fax. 212.684.0776 [www.dennismiller.com](http://www.dennismiller.com)

STACKLAB



#### Table Top + Leg Material Options

1. ECC with 1000 Black pigment
2. ECC with 1000 White pigment
3. ECC with Natural Shade pigment
4. ECC with Clean Grey pigment

*\* Please note that colours may vary between production runs.*