



ECC | Natural  
Photo © Patrick Biller

## **ECC Collection** | Console

STACKLAB

DENNIS MILLER NEW YORK

T 212.684.0070 [dennismiller.com](http://dennismiller.com)

## ECC Collection | Console



Visualization © STACKLAB

Featured in the ECC Collection, this family of consoles incorporates over 90% recycled materials. With ECC's unique half-inch wall thickness, these tables are lightweight and versatile compared to bulkier standard reinforced concrete tables.

ECC is suitable for both indoor and outdoor settings.

A standout feature of the collection is the incorporation of domestic hardwood, allowing users the luxury of selecting between two premium materials for each component in indoor settings.

### MATERIALS + FINISHES

#### ECC Finish Options (Top and Legs):

- ECC | 1000 Black
- ECC | 1000 White
- ECC | Clean Grey
- ECC | Natural

*Custom pigments available upon request*

**and/or**

#### Wood Options (Top and Legs):

- Black Walnut | Oil
- Maple | Oxidized with Lacquer
- White Oak | Intense Black Oil
- White Oak | Oil

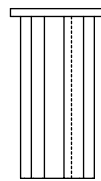
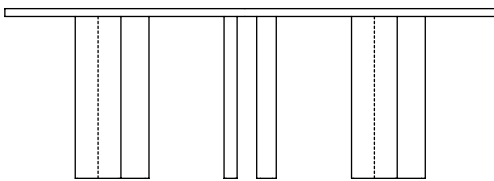
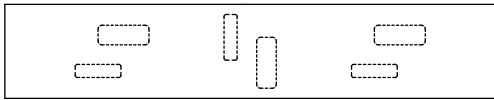
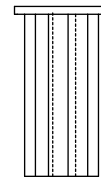
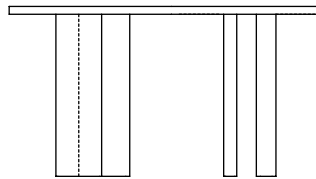
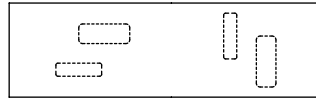
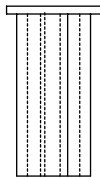
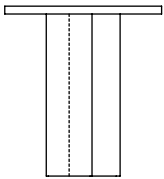
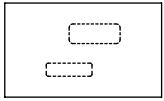
#### Weight

Varies, please inquire

#### Lead Time

16-18 weeks

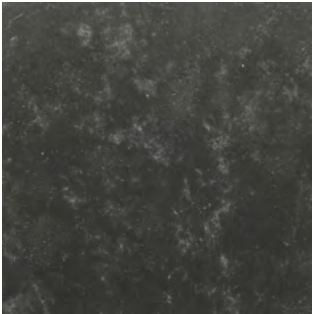
## ECC Collection | Console



- 30" W x 18" D x 29 1/2" H or 31 1/2" H | Two Legs
- 60" W x 18" D x 29 1/2" H or 31 1/2" H | Four Legs
- 72" W x 18" D x 29 1/2" H or 31 1/2" H | Four Legs
- 72" W x 18" D x 29 1/2" H or 31 1/2" H | Six Legs
- 94" W x 18" D x 29 1/2" H or 31 1/2" H | Six Legs

## ECC Collection | Console

### ECC Finish Options



ECC | 1000 Black



ECC | 1000 White

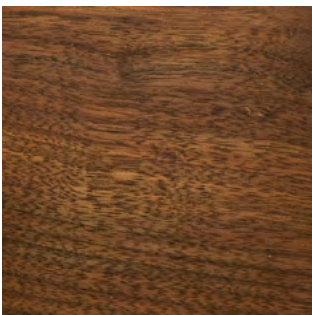


ECC | Clean Grey

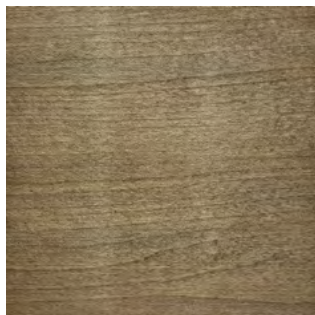


ECC | Natural

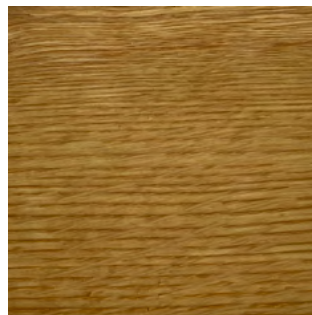
### Wood Options



Black Walnut | Oil



Maple | Oxidized with  
Lacquer



White Oak | Oil



White Oak | Intense Black Oil

*\*Please note that colors may vary between production runs.*