

skram

skramfurniture.com



lineground side table/nightstand #3

L08



The lineground no. 3 side table features solid timber construction, mortise-and-tenon joinery, and mitered corners with matched seams/waterfall edges. Drawers are maple with cork-lined bottoms with soft-closing concealed runners and low profile tab style drawer pulls. Skram timber and veneer options are available on this product, as well as options for contrasting drawer face materials such as leather, opaque color, or bespoke options. Custom sizes, configurations, and materials are available. Residential or contract use.

skram

L08

width 34 / 86cm

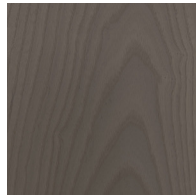
depth 18 / 46cm

height 22 / 56cm

Timber



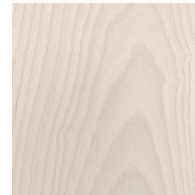
WA-N: White
Ash, Natural



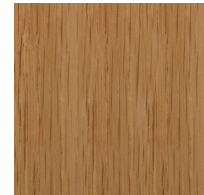
WA-G: White
Ash, Grey



WA-E: White
Ash, Ebonized



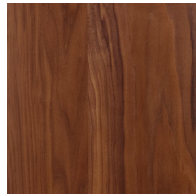
WA-WW: White
Ash,
Whitewashed



RWO-N: Rift
White Oak,
Natural



P-WAL: Walnut,
Pale

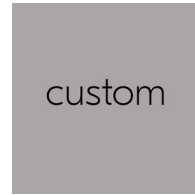


WAL: Walnut,
Natural



matte
opaque

matte opaque



custom

custom

Metal

Natural



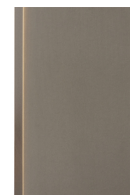
SS4: Brushed
Stainless Steel



GML: Gunmetal



DRB: Dark
Rubbed Bronze



MRB: Medium
Rubbed Bronze



NRB: Natural
Rubbed Bronze

skram

Metal

Matte Opaques

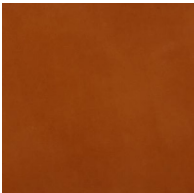


MOB: Matte
Opaque Black



custom

Leather



CL-TN-H: Tan



CL-CNT-H:
Chestnut



CL-BLK-H: Black