

# OPEN LAMP

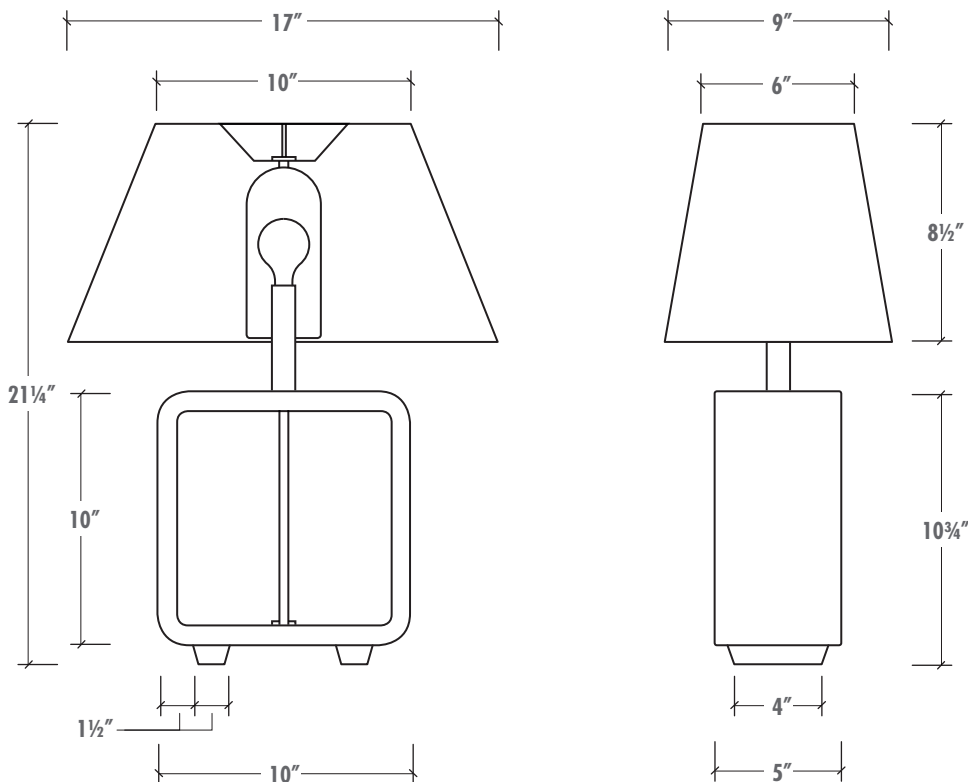
---



OSO INDUSTRIES

# OPEN LAMP

This sculptural table lamp is an exploration of space and texture with three distinct surfaces: a smooth but pock-marked cast surface on the outside, a textured leather-like surface on the interior of the lamp body, and a polished terrazzo-like surface of the narrow faces of the concrete lamp body. The open body exposes a fabric-covered cord that extends through the central void and culminates in a rounded, tapered linen shade.



## MATERIALS

Body is colored cast concrete with marble aggregate, available in 12 standard colors. Shade is linen, available in white or grey.

## DIMENSIONS

10 3/4" tall and is 5" wide, with the tapered linen shade measuring 17" wide and 8 1/2" tall. The lamp overall is 21 1/4" tall.



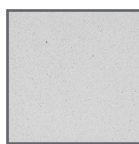
CHESTNUT



TEAL



BLACK



WHITE



CHARCOAL



SMOKE



GREY



ASH



LEATHER



TAUPE



SAND



TAN

## CONCRETE COLORS

Our concrete furniture line is available in any of our 12 standard cast concrete colors. Shown at left are our signature cast concrete finishes, which are honed and brought to a high polish. Custom colors can be made by request.



**OSOINDUSTRIES.COM**

**GREENPOINT MANUFACTURING  
AND DESIGN CENTER  
1205 MANHATTAN AVE.  
SUITE 1-1-3  
BROOKLYN, NY 11222**