

Felt Triangle Stool, Full-Height,
Nickel Plated Steel
Photo © Rajeshta Julatum



Felt Collection | Triangle

STACKLAB

DENNIS MILLER NEW YORK

T 212.684.0070 dennismiller.com

Felt Collection | Triangle



Aligning with this collection's objectives, the Felt Triangle presents an equilateral design for either standalone or modular configurations. It offers customizable colors across 29 felted wool remnants and 10 post-industrial PET shades. Using STACKLAB's clamping hardware, the triangle has leg choices of Canadian maple, black walnut or plated steel.

DIMENSIONS

16" Equilateral x 18" H
 Quarter Height - 3 Color Blocks
 Half Height - 8 Color Blocks
 Full Height - 14 Color Blocks

MATERIALS

Felt Options

Remnant Colors
One color per block
Available for use in all blocks

PET Options

60% Recycled Polyethylene Terephthalate (PET)
One color per block
PET not to be used on the top block of any assembly
PET not to be used in the backs of either side or arm chairs

Metal Finish Options

Black Oxide Plated Steel | Satin
 Bronze Plated Steel | Mirror Polished
 Bronze Plated Steel | Satin
 Nickel Plated Steel | Mirror Polished
 Nickel Plated Steel | Satin

Wood Leg Finish Options

Black Walnut | Oil
 Maple | Intense Black Oil
 Maple | Natural Oil

Weight

~15-45 lbs. (varies, please inquire)

Lead Time

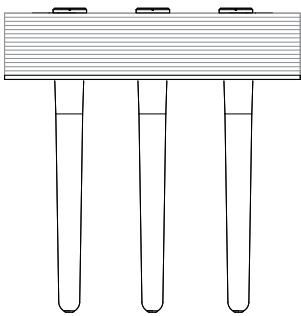
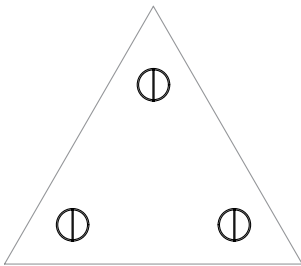
12-14 weeks



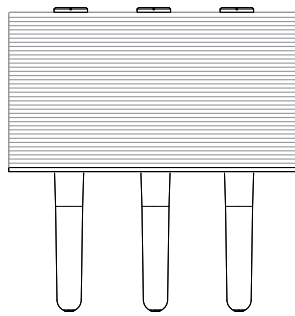
Use your mobile device to scan the QR code to go to our mobile site. Once there, activate the AR Experience by tapping "Augmented Reality."

*Available on iOS devices

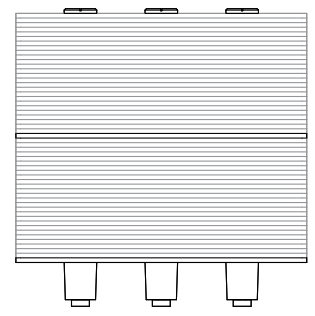
Felt Collection | Triangle



Quarter Height - 3 Color Blocks



Half Height - 8 Color Blocks



Full Height - 14 Color Blocks

16" Equilateral x 18" H

Felt Collection | Triangle

STEP 1

SELECT YOUR PRODUCT
TYPE AND DIMENSION
DETAILS

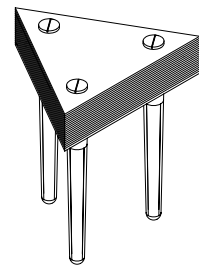
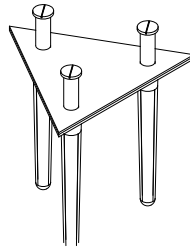
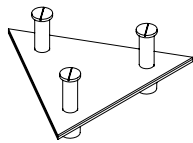
STEP 2

SELECT YOUR LEG
MATERIAL AND FINISHES

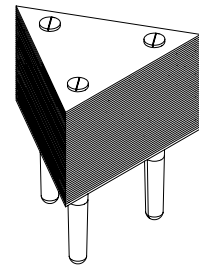
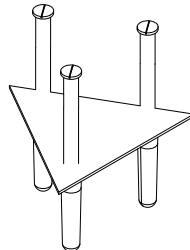
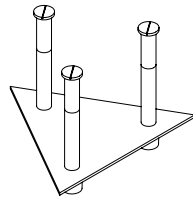
STEP 3

SELECT YOUR MATERIAL
AND COLOR SPECIFICATIONS
FOR EACH BLOCK

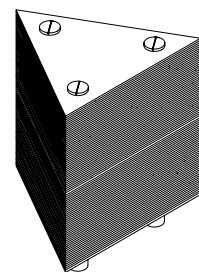
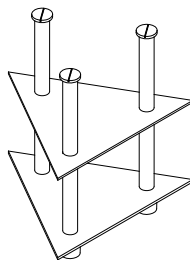
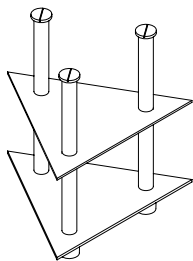
QUARTER
HEIGHT



HALF
HEIGHT



FULL
HEIGHT



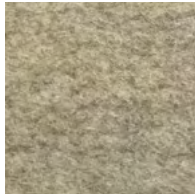
Felt Collection | Triangle

Natural Felted Merino Wool

Remnant Colors (3mm/5mm)



Aubergine



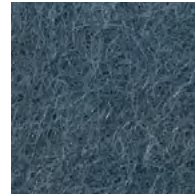
Beige



Bordeaux



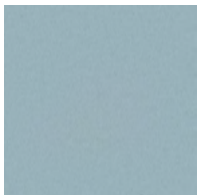
Champagner



Dunst



D'Grün



Eis



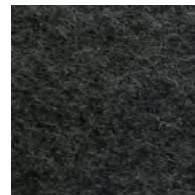
Flieder



Glestcher



Granat



Graphit



Hellrot



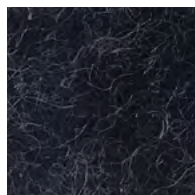
Himmel



Honig



H'Blau



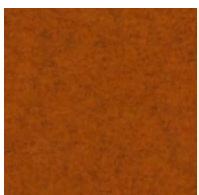
Indigo



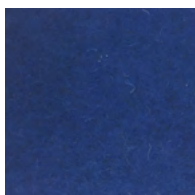
Lagune



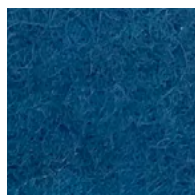
Maigrün



Orange



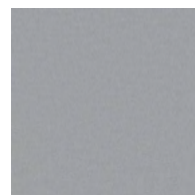
Ozean



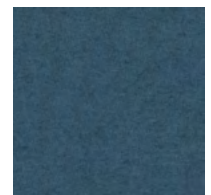
Petrol



Salbei



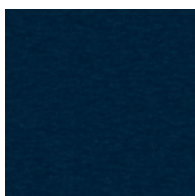
Silber



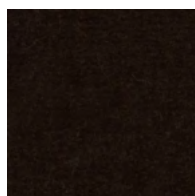
Stahl



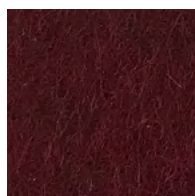
Terracotta



Traube



Trüffelbraun



Weinrot



Weiß

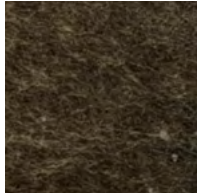
**Please note that colors may vary between production runs.*

Felt Collection | Triangle

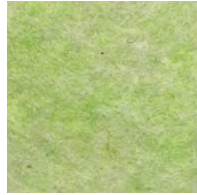
60% Recycled Polyethylene Terephthalate (PET)



Charcoal



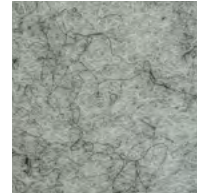
Earth Brown



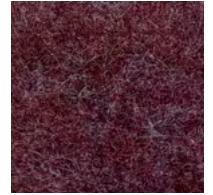
Honey Dew



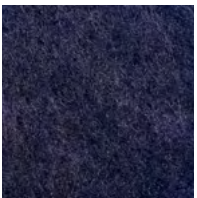
Lemon



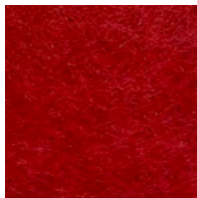
Marble



Maroon



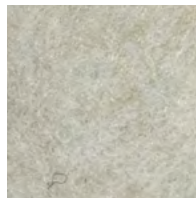
Midnight Blue



Red



Salmon



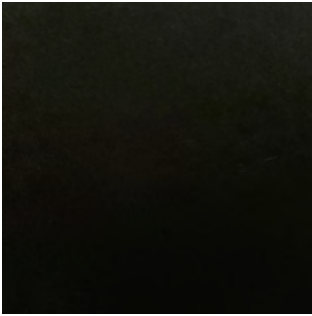
Sand Dollar

*PET not to be used on the top block of any assembly
PET not to be used in the backs of either side or arm chairs*

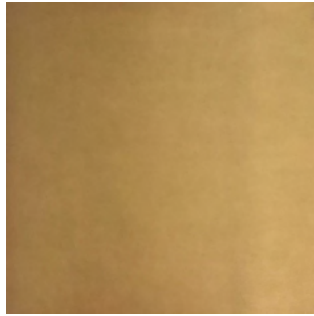
**Please note that colors may vary between production runs.*

Felt Collection | Triangle

Metal Finish Options



Black Oxide Plated Steel | Satin



Bronze Plated Steel | Mirror Polished



Bronze Plated Steel | Satin

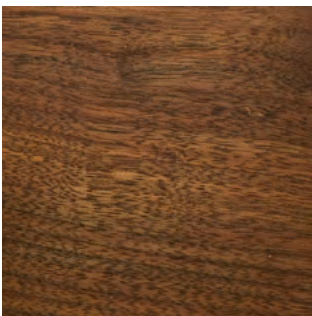


Nickel Plated Steel | Mirror Polished

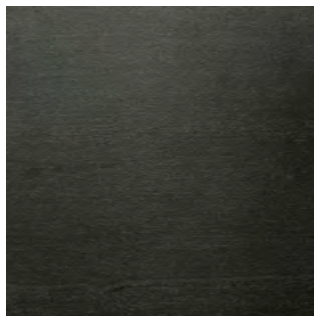


Nickel Plated Steel | Satin

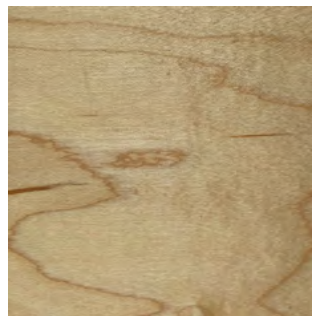
Wood Leg Finish Options



Black Walnut | Oil



Maple | Intense Black Oil



Maple | Natural Oil

**Please note that colors may vary between production runs.*

Felt Collection | Driver



Each felt stool, bench or chair comes with an assembly driver to assist in the tightening and release of the felt clamping hardware.

This allows for the re-organization of felt layers, if desired. Each tool is made out of steel, with a matching plate finish.

DIMENSION

5" W x 3-1/2" D

MATERIALS + FINISH OPTIONS

Black Oxide
Mirror Polished Bronze or Nickel Plate
Satin Bronze or Nickel Plate