



Mirror Polished Cast and
Milled Aluminum
Photo © Rajeshta Julatum

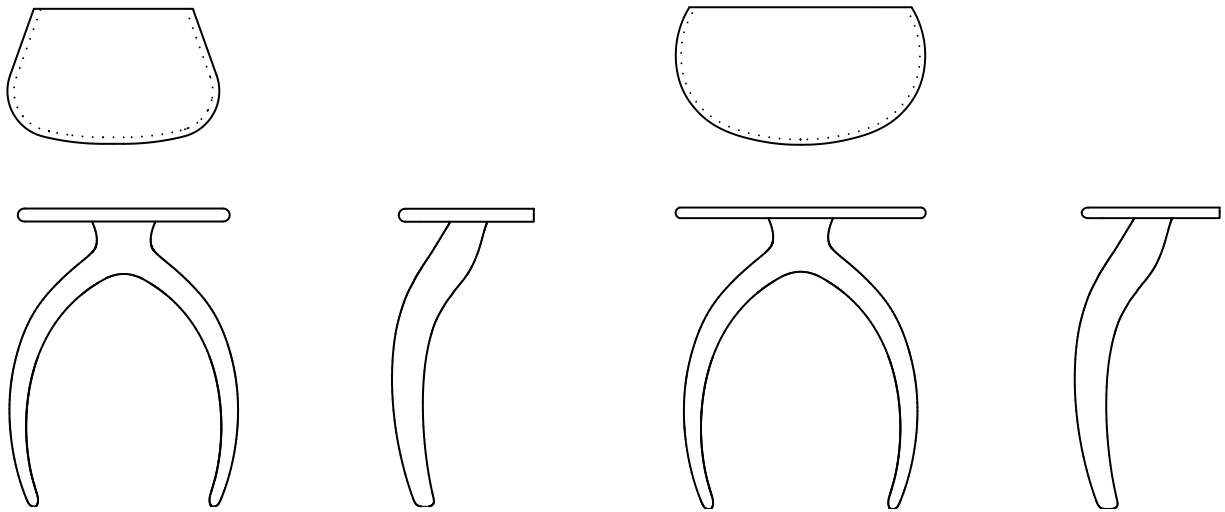
Wishbone Collection | Vanity

STACKLAB

DENNIS MILLER NEW YORK

T 212.684.0070 dennismiller.com

Wishbone Collection | Vanity



The Wishbone Collection, developed by STACKLAB, was designed and prototyped almost entirely in digital space to limit waste during design development. Central to its identity is the signature cast metal leg – conceived using a novel algorithm and manufactured with regional partners within 300 miles of the STACKLAB studio, specializing in the production of machine parts for heavy industry.

The vanity, measuring 28" in height, features either a solid aluminum or bronze demi-lune tabletop paired with cast Wishbone legs in bronze, or aluminum.

The Wishbone Vanity is suitable for both indoor and outdoor use.

DIMENSIONS

20" L x 13" D x 28" H
 27" L x 13" D x 28" H

MATERIALS

Metal Options

Cast Aluminum | Aged Brass Patina
 Cast Aluminum | Aged Nickel Patina
 Cast Aluminum | Black Brass Patina
 Cast Aluminum | Mirror Polished
 Cast Aluminum | Satin
 Cast Bronze | Satin

Weight

Varies, please inquire

Lead Time

14-16 weeks

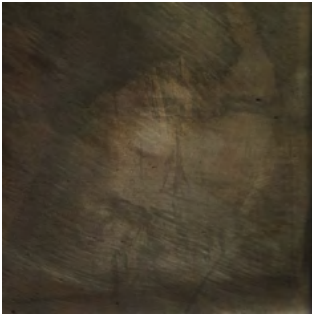


Use your mobile device to scan the QR code to go to our mobile site. Once there, activate the AR Experience by tapping "Augmented Reality."

*Available on iOS devices

Wishbone Collection | Vanity

Metal Options



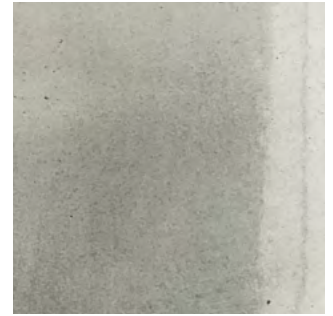
Cast Aluminum | Aged Brass Patina



Cast Aluminum | Aged Nickel Patina



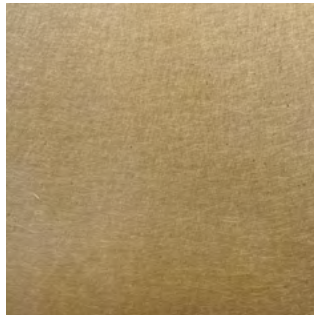
Cast Aluminum | Black Brass Patina



Cast Aluminum | Mirror Polished



Cast Aluminum | Satin



Cast Bronze | Satin

**Please note that colors may vary between production runs.*