



Shown: ECC Natural Shade and Cast Iron with
Nordy Bronze Plate
Photography: Sean McBride
© Stacklab Inc. All rights reserved

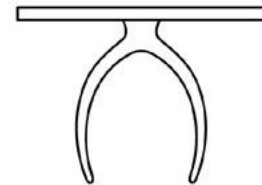
Wishbone Collection | Dining | Desk - ECC/Stone

Unlimited

STACKLAB|OBJECT

DENNIS MILLER NEW YORK

T 212.684.0070 dennismiller.com



Wishbone | Dining | Desk - ECC/Stone

Unlimited

Available as a dining table or desk, this design pairs STACKLAB's signature Wishbone castings with Engineered Cementitious Composite (ECC).

The Wishbone series honours central-eastern Canada's manufacturing heritage, the Wishbone is cast in sand- the same process used to produce machine parts for heavy industry.

Dimensions

8 Seats: 42" W x 90" L x 29-1/2" H

10 Seats: 42" W x 115" L x 29-1/2" H

12 Seats: 42" W x 138" L x 30" H

6 Seats Solid Stone: 40" W x 80" L x 29-1/2" H

8 Seats Solid Stone: 40" W x 104" L x 29-1/2" H

10 Seats Solid Stone: 40" W x 128" L x 29-1/2" H

Materials and Finishes

Table Top Options:

- ECC with 1000 White pigment
- ECC with 1000 Black pigment
- ECC with Natural Shade pigment
- ECC with Clean Grey pigment
- Custom Solid Stone (Please Inquire)

Leg Options:

- Cast Iron with Wax Finish / Nordy Bronze Plate
- Mirror Polished Cast Aluminum with Wax Finish
- Blackened Cast Aluminum with Wax Finish
- Mirror Polished Cast Bronze with Wax Finish
- Satin Peened Bronze with Wax Finish

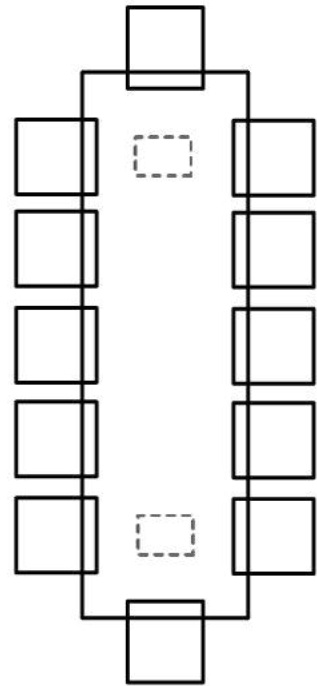
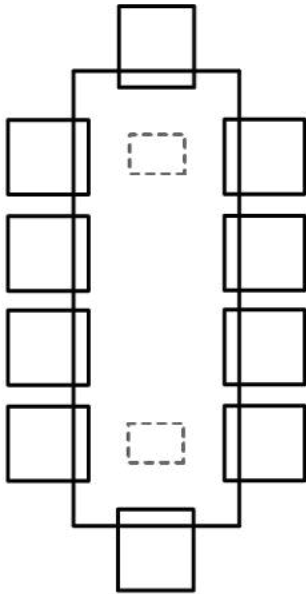
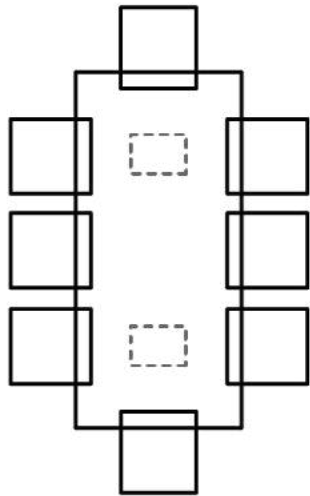
**Contact us for detailed material information.*

Weight

- ~365 - 775 lbs. (Varies)

Lead Time

- 12 - 14 Weeks



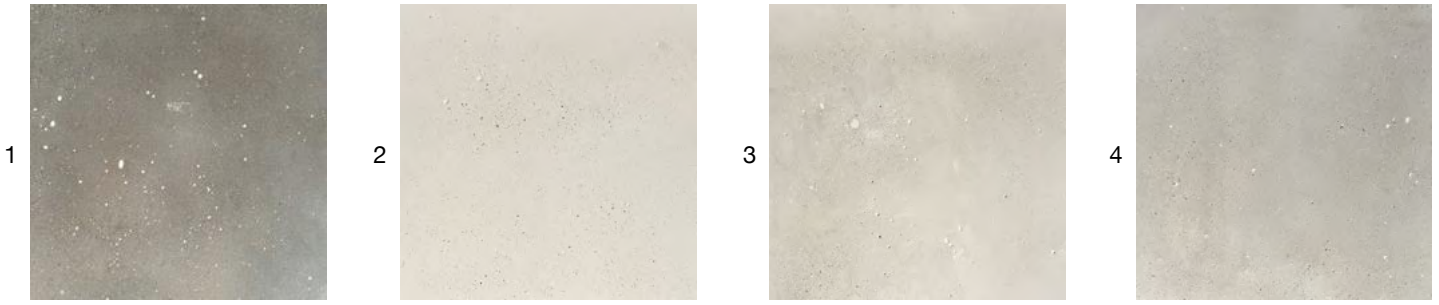


Table Top Material Options

1. ECC with 1000 Black pigment
2. ECC with 1000 White pigment
3. ECC with Natural Shade pigment
4. ECC with Clean Grey pigment
5. Custom Solid Stone (Not Shown, Please Inquire)

** Please note that colours may vary between production runs.*



Leg Material Options

1. Blackened Cast Aluminum with Wax Finish
2. Mirror Polished Cast Aluminum with Wax Finish
3. Satin Peened Bronze with Wax Finish
4. Mirror Polished Cast Bronze with Wax Finish
5. Cast Iron with Nordy Bronze Plate and Wax Finish

** Please note that colours may vary between production runs.*