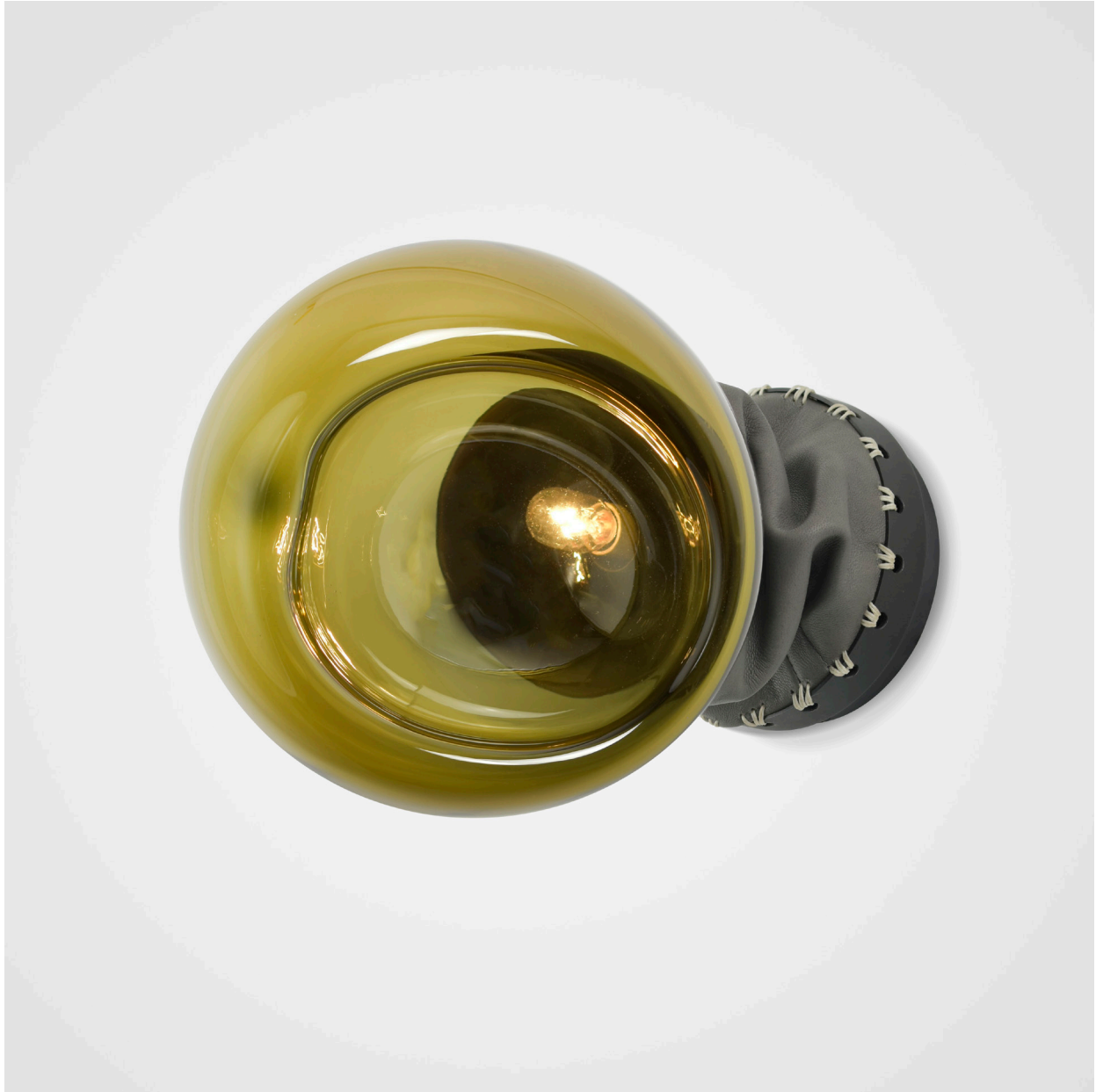


F U S E

lighting



TANGIER SCONCE
9088

PATINATED STEEL WITH OLIVE GLASS AND MINK LEATHER

TANGIER SCONCE

9088

DIA: APPROX 8 1/2" (21.6 CM)

PROJECTION: 11 1/2" (29.2 CM)

WEIGHT: 4 1/2

WIRING: SINGLE CANDELABRA BASE

SOCKET, 60 WATT MAX.

RECOMMENDED BULB: 25 WATT CLEAR
T-7

METAL FINISHES

BRUSHED BRASS

LIGHT ANTIQUE BRASS

DARK ANTIQUE BRASS

POLISHED NICKEL

SATIN NICKEL

OIL RUBBED BRONZE

GLOSS WHITE POWDER COAT

MATTE BLACK POWDER COAT

PATINATED STEEL

GLASS SHADES

COLOR (CHOOSE ONE)

CLEAR AND OPAL

OR

SMOKE AND AMBER

LEATHER OPTIONS

BROWN

BLACK

WHITE

CREAM

MINK

C.O.L. (UPCHARGE)

fuselighting.com

© COPYRIGHT FUSE LIGHTING.
ALL RIGHTS RESERVED.